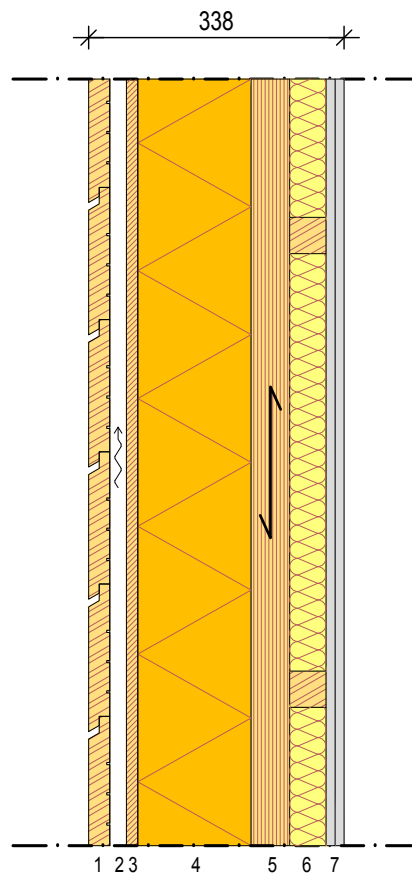


# PU sandwich exterior wall element

...



## STRUCTURAL LAYERS

1. External cladding
2. 22x100 timber battens c/c 600 + air gap
3. 15 mm OSB panel
4. 150 mm polyurethane insulation
5. 51 mm Kerto-Q panel ( grain direction vertical )
6. 48x48 c/c 600 timber cross-battens + 50 mm mineral wool insulation
7. Internal paneling

## TECHNICAL SPECIFICATIONS

- Category: Wall element ( external wall )
- Key benefit: Cost efficient wall with less material consumption
- Economical span: 3,0 m
- Resistance to fire class: -
- Thickness: 338 mm
- Airborne sound reduction factor: -
- Impact sound transmission factor: -
- Thermal properties: U-value = 0,12 W/m<sup>2</sup>K