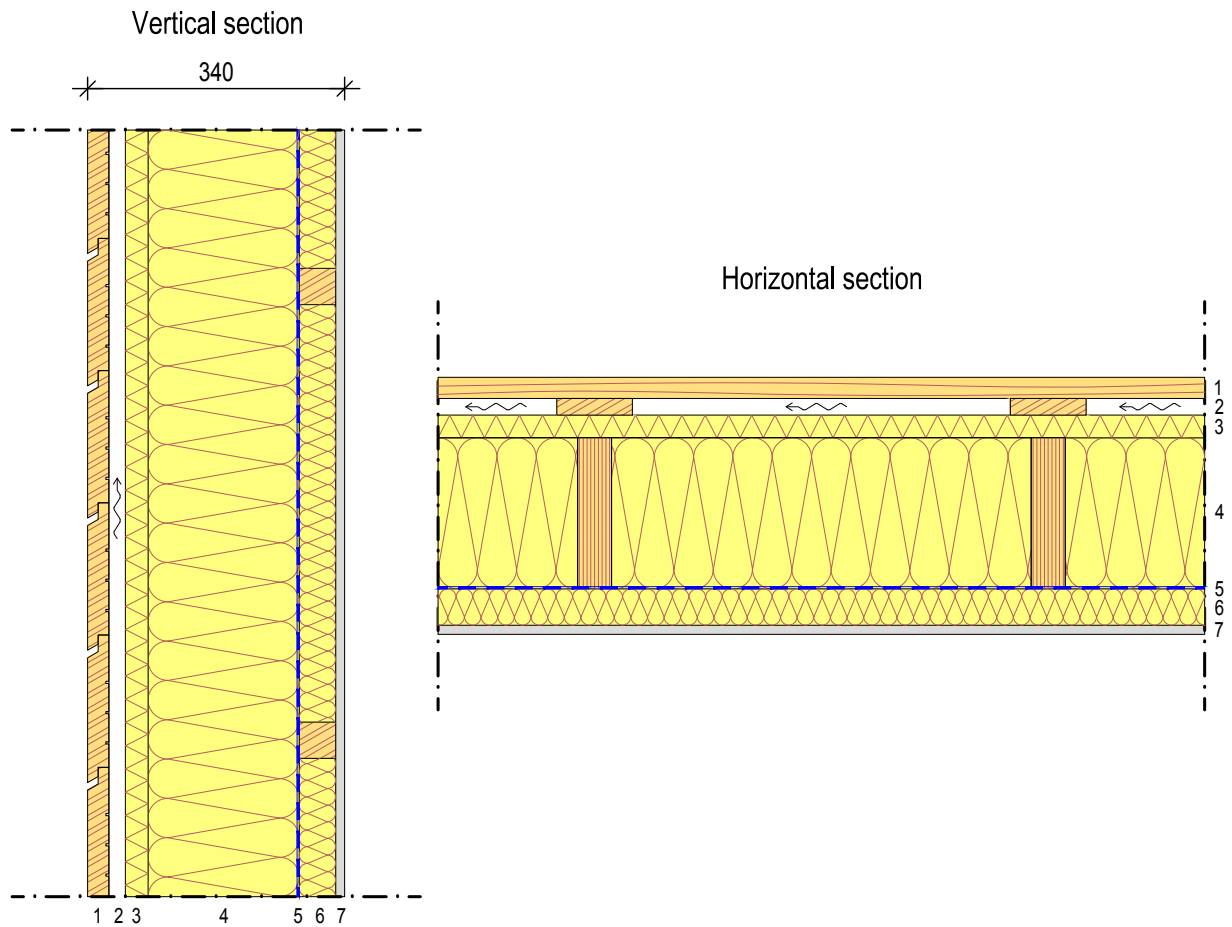


Exterior wall stud

...



STRUCTURAL LAYERS

1. External cladding
2. 22x100 timber battens c/c 600 + air gap
3. 30 mm windproof layer + insulation
4. 45x200 Kerto-T c/c 600 + 200 mm mineral wool insulation
5. Water vapor membrane
6. 48x48 timber cross-battens c/c 600 + 50 mm mineral wool insulation
7. Internal paneling

TECHNICAL SPECIFICATIONS

- Category: Structure (other)
- Key benefit: Easier installation with stiff fastening surface
- Economical span: 5,9 m
- Resistance to fire class: -
- Thickness: 340 mm
- Airborne sound reduction factor: -
- Impact sound transmission factor: -
- Thermal properties: U-value = 0,14 W/m²K